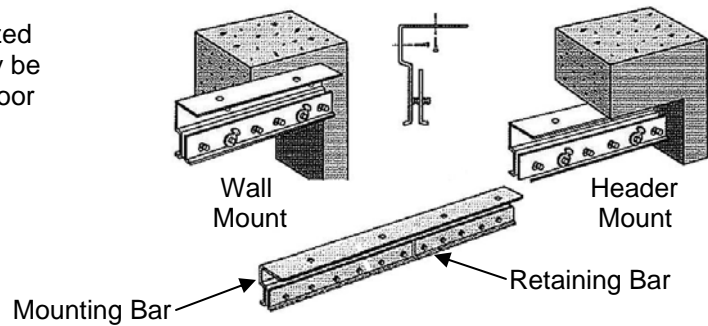


# Installation Instructions for 80110 to 80112

## Door Strip Kits

### Installation Instructions:

**Universal Mounting Hardware:** Kits include galvanized steel mounting bars and retaining bars. Mounting may be directly to the wall or can be attached directly to the door header. See Figure 1.



**Figure 1**

### Wall Mounting:

**Note:** If multiple bars are required, start with Bar (1) to the far left and continue to the right in numerical order [(2), (3), etc.]. All joints must be aligned and butted together perfectly.

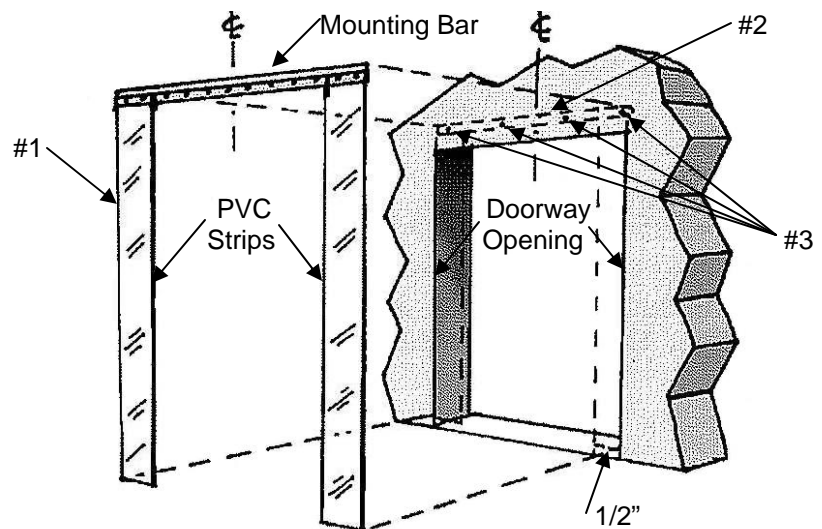
**Step #1:** Temporarily attach a PVC strip to either end of the mounting bar(s).

**Step #2:** Center and level the bar(s) above the opening so the strips are 1/2" above the floor

**Step #3:** Mark mounting bar(s) anchor holes and remove the bar(s).

**Step #4:** Drill anchor holes and place anchors (not supplied) into those holes.

**Step #5:** Take the temporary strips off the mounting bar(s) and attach the bar(s) with lag screws (not supplied).



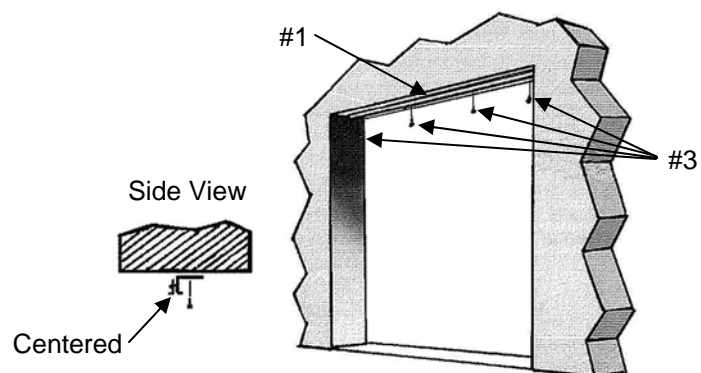
### Header Mounting:

**Note:** If multiple bars are required, start with Bar (1) to the far left and continue to the right in numerical order [(2), (3), etc.]. All joints must be aligned and butted together perfectly.

**Step #1:** Center the mounting bar(s) on the underside of the header. Mark the mounting holes.

**Step #2:** Remove the bar(s) and drill the anchor holes.

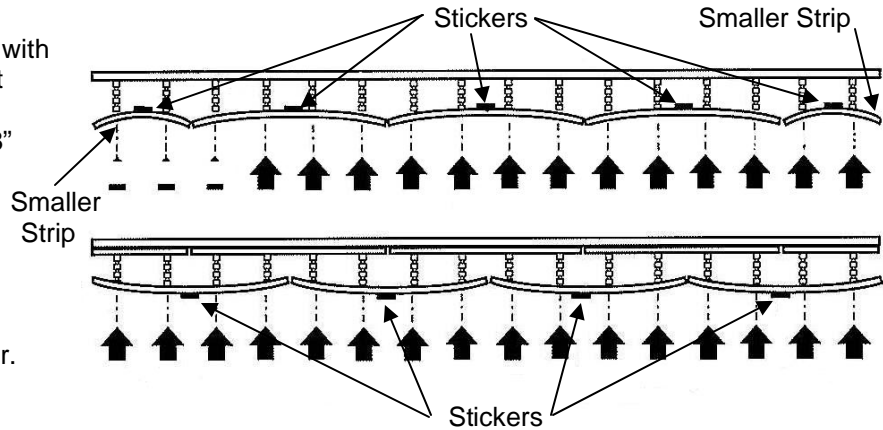
**Step #3:** Place anchors in each hole and attach the mounting bar(s) with lag screws (not included).



## Hanging the PVC Strips:

**IMPORTANT:** All PVC strips have a natural curve across the width of the material. When hung properly it creates a barrier against drafts.

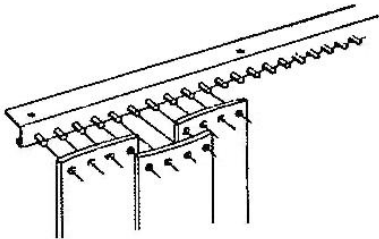
**Step #1:** Place 1<sup>st</sup> row of strips on studs with sticker *away* from installer. Start at the far left with one smaller strip, skip 4", hang the second 8" strip, skip 4", repeat to the far right making sure to end with the second smaller strip. See Figure 2 below.



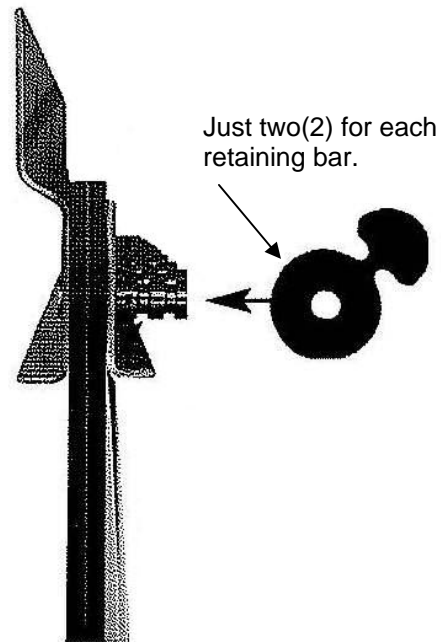
**Step #2:** Place 2<sup>nd</sup> row of strips on studs with sticker towards the installer. Centering strips over 4" gaps.

**Step #3:** Place retaining bar(s) over studs, push bar snugly against PVC strips and lock into place.

**Step #4:** Place LOC tabs over studs, flush against the retaining bar(s). See Figure 3 below.



**Figure 2**



**Figure 3**